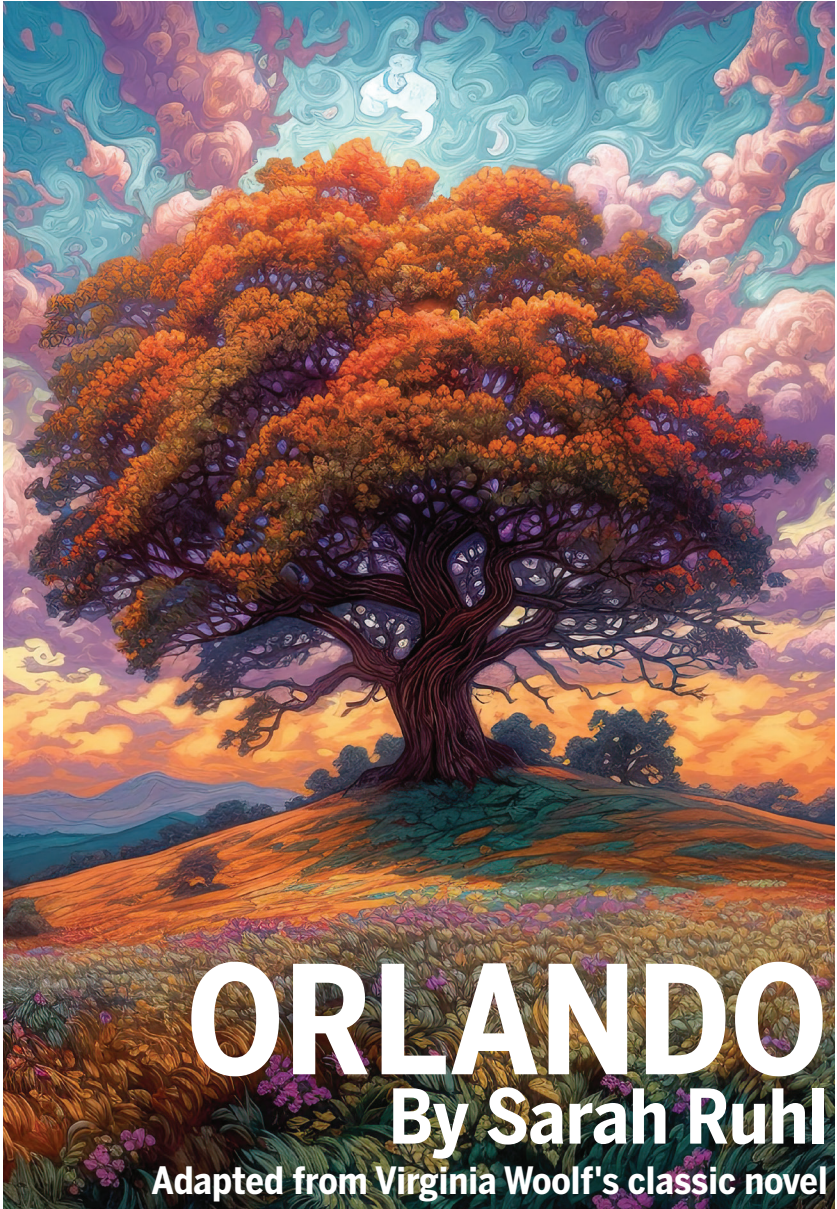




THEATRE & DANCE

theatre.indiana.edu



ORLANDO

By Sarah Ruhl

Adapted from Virginia Woolf's classic novel

DIRECTED BY LAUREN DIESCH

RUTH N. HALLS THEATRE

IU Theatre + Dance acknowledges and honors the Indigenous communities native to this region, and recognizes that Indiana University Bloomington is built on Indigenous homelands and resources. We recognize the myaamiki, Lénape, Bodwéwadmik, and saawanwa people as past, present, and future caretakers of this land.

LIVE PERFORMANCE

The mission of the Department of Theatre, Drama, and Contemporary Dance is to advance the art, scholarship, and appreciation of theatre and dance and its place in society. We pursue this mission collectively and as individuals through theatrical productions, scholarship and publication, presentation of our work in national and international venues, formal instruction, and individual mentoring.

The Department of Theatre, Drama, and Contemporary Dance is accredited by the National Association of Schools of Theatre and is a member of the University/Resident Theatre Association and United States Institute for Theatre Technology.

LIVING IMPACT



Message from the chair



Greetings and welcome to the IU Theatre and Dance 2023-2024 production season!

We are thrilled with the productions we have for our students and audiences this year.

Live performance is a place for communities to gather for engaged storytelling. Our stories this year continue with our tradition of bringing the most exciting, meaningful, and entertaining work to our audiences. We continue to use live performance as an opportunity to express the zeitgeist of our world. We hope that you will consider joining us for many additional lectures, discussions, and collaborations throughout the season.

This year we welcome a new generation of graduate and undergraduate students that will directly contribute to the artistry and craft. We'd like to take a moment to welcome many guest artists to our season – from choreography and music direction to directing and designing. We'd also like to welcome Dr. Sarah Johnson, who joins our faculty as the Head of Dramaturgy, and David Tracy, our new Public Relations and Audience Development Specialist.

We'd also like to take a moment to bid a fond farewell to Laura Judson and Madison Colquette, two fantastic staff members in our department community who are moving on to wonderful new chapters. We thank them for their service to our department and especially to our students.

Thank you to our patrons, donors, Theatre Circle members, and of course YOU, the audience experiencing our students' work at this performance! Please visit our website or pick up a brochure to learn more about how you can become a member of the Theatre Circle, and to find out more about our upcoming productions, student independent projects, guest artists, student organizations, and class offerings. We look forward to having you join us for all our live performances this year and wish you our very best for the 2023-2024 academic year!

With Gratitude,
Linda Pisano
Chair & Professor,
Dept. of Theatre & Dance



PRESENTS

ORLANDO

Written by Sarah Ruhl

Adapted from the original by Virginia Woolf

DIRECTOR	Lauren Diesch [^]
ASSISTANT DIRECTOR	Alex Coniaris
SCENIC DESIGNER	Maggie Jackson*
COSTUME DESIGNER	Nicole Hiemenz**
LIGHTING DESIGNER	Mads West
SOUND DESIGNER	Joshua Stallings
STAGE MANAGER	Sarah Mansfield
ASST. STAGE MANAGER	Molly Lenig
DRAMATURGS	Sarah Johnson Madison Colquette

[^]M.F.A. Directing Thesis—Advisor: Ansley Valentine

*M.F.A. Scenic Design Thesis—Advisor: Reuben Lucas

**M.F.A. Costume Design Thesis—Advisor: Katie Cowan Sickmeier

The video and/or audio recording of this production is strictly prohibited.
Do not use cell phones, pagers, or other devices that may emit sound or light.

RUTH N. HALLS THEATRE | SEPT 29–OCT 7

Cast

ORLANDO	El Hendricks
SASHA	Grania Whelan
ENSEMBLE 1	Alexys Hatch
ENSEMBLE 2	Renee Carter
ENSEMBLE 3	Emma Shapiro
ENSEMBLE 4	Jayla Austin-Duarte
ENSEMBLE 5	Katelyn Dunivan
ENSEMBLE 6	Antonia Daleke
ENSEMBLE 7	Peter Valentino
ENSEMBLE 8	Jillian Hurley
ENSEMBLE 9	Nomsa Andedo
ENSEMBLE 10	Isabel Barredo
ENSEMBLE 11	River Epperson
ENSEMBLE 12	Evan Anderson
U/S: ORLANDO	Elizabeth Kasper

Director's note



Orlando is my thesis. That word carries with it such a finality of purpose. A capstone achievement of a long journey of self-discovery that encompasses hours of learning, exploration, and failure. An entrance into the world that shouts: I have arrived! But this is false. Art is not about the arrival—the product. It is about the process of doing. And self-discovery is not a linear journey with a singular destination. It is a messy push and pull across time and space.

This play explores and revels in questions of identity and purpose. *Orlando* stumbles into themselves as they chase their passion across time over continents. Their path is unplanned and their destination entirely unknowable. They are an artist for whom a single poem takes centuries to write. They are lover who questions love. They transcend gender, living in both and neither. This play and this production do not conform to rules—rules of gender, time, or even storytelling itself. It lives in the in-between. As does life.

As you watch this play, I hope a moment of *Orlando*'s journey resonates with your own—regardless of how fantastical or different it seems. Set your expectations aside, and hop aboard for the ride.

Lauren Diesch
Director

UP NEXT AT IU THEATRE & DANCE:

Daring, provocative, and exuberantly entertaining, Cabaret explores the life of Bohemian Berlin in the 1930s.

A black and white photograph of a stage set for the play Cabaret. In the foreground, a round table holds a glass, a bottle, and a hat. A lamp with a fringed shade stands behind the table. The background is dark and moody.

Ψ THEATRE & DANCE
CABARET
Music by John Kander
Lyrics by Fred Ebb
Book by Joe Masteroff
Based on the play by John Van Druten
and stories by Christopher Isherwood
Directed and Choreographed by Lauren Haughton Gillis
Musical Direction by Brandon Magid
NOVEMBER 2–11
WELLS-METZ THEATRE

Dramaturg's note



"I am reduced to a thing that wants Virginia."

—*Vita Sackville-West*

"I lie in bed making up stories about you."

—*Virginia Woolf to Vita Sackville-West*

Virginia Woolf frames her novel *Orlando* as a biography, following over the course of centuries a young man who transforms quite suddenly into a young woman.

Real historical figures and events wind their way through Orlando's journey. He is whisked to court as one of Queen Elizabeth I's lover, he skates across the Thames during London's Great Frost of 1608, and she drives a motor car to the department store in 1920s, the present moment when the novel was published. Woolf based the character of Orlando on her lover, Vita Sackville-West. Sackville-West's son once called *Orlando* "the longest and most charming love letter in literature." Sarah Ruhl's adaptation of this novel to the stage explores the inherent performativity of gender.

From the poem, "The Land" by Vita Sackville-West

The poet like the artisan

Works lonely with his tools; picks up each one,
Blunt mallet knowing, and the quick thin blade,
And plane that travels when the hewing's done;
Rejects, and chooses; scores a fresh faint line;
Sharpens, intent upon his chiselling;
Bends lower to examine his design,
If it be truly made,
And brings perfection to so slight a thing.
But in the shadows of his working-place,
Dust-moted, dim,
Among the chips and lumber of his trade,
Lifts never his bowed head, a breathing-space
To look upon the world beyond the sill,
The world framed small, in distance, for to him
The world and all its weight are in his will.
Yet in the ecstasy of his rapt mood
There's no retreat his spirit cannot fill,
No distant leagues, no present, and no past,
No essence that his need may not distil,
All pressed into his service, but he knows
Only the immediate care, if that be good;

The little focus that his words enclose;
As the poor joiner, working at his wood,
Knew not the tree from which the planks were taken,
Knew not the glade from which the trunk was brought,
Knew not the soil in which the roots were fast,
Nor by what centuries of gales the boughs were shaken,
But holds them all beneath his hands at last.

Sarah Johnson, PhD, MFA,
Co-Dramaturg



LILLY LIBRARY

Orlando Party

Gender Rebels and Queer Lives

**You're invited to
Orlando Party: Gender Rebels and Queer Lives
Tuesday, October 3, 4:00–6:00 p.m.**

To celebrate IU's production of *Orlando*, adapted from the novel by Virginia Woolf by Sarah Ruhl, we are throwing an Orlando party, featuring a pop-up exhibition of gender rebels and queer lives throughout history. At 4:30p.m., students from the IU Department of Theatre and Dance will perform dramatic readings from letters in the Lilly Library collections. These letters are from Vita Sackville-West, Virginia Woolf's lover upon whom the character of Orlando was based, and detail Vita's reaction to seeing her genderbent self in fictional form.

Pop-up exhibition begins at 4:00 p.m.
Light refreshments will be provided after the readings. *Register for free.*



ORLANDO
IS SPONSORED IN PART BY:

Associate Producers

Phil Evans and Herbert Kuebler

LIGHT AND TRUTH

LUX ET VERITAS • FALL 2023



COLLEGE OF ARTS + SCIENCES
THEMESTER

Inspired by Indiana University's motto, the College of Arts and Sciences presents its final themed semester this fall. Themester 2023 focuses on Lux et Veritas | Light and Truth and explores the nature, history, artistic and scientific expressions of light and truth, as well as the cultural role of inquiry in relation to these concepts as they are found in the arts and sciences...and beyond.

Cast



NOMSA ANEDO
(Ensemble: *Captain, Old Woman*)

(he/him) is a third year undergraduate at Indiana University. Ever since he was young, he has always been fascinated with acting and always

loved to act. Come see Nomsa perform as the chorus along with being Captain and an Old Lady in *Orlando*! He has participated in a few short films throughout his college career but this is his first production with IU, and he is very excited to be with us.



EVAN ANDERSON
(Ensemble: *Marmaduke*)

(he/him) is a third-year Theatre and Drama student from Indianapolis, IN. He is also studying toward minors in Spanish and Arts Management. IU

credits include: Fred Atkins in *Gross Indecency: the Three Trials of Oscar Wilde* and *Freddy #2 in 1970's College Sex Comedy*. He is also proud to be Literary Director and Assistant Financial Director for University Players this year.



JAYLA AUSTIN-DUARTE
(Ensemble: *Penelope Hartopp, Young Woman in Flood, Shakespeare*)

(she/her) is a sophomore in the Musical Theatre Program at IU. She has been in numerous works including *Newsworthy*,

Once On This Island, *Alice In Wonderland*, *Legally Blonde*, and some short films. This is her first IU mainstage production.



ISABEL BARREDO
(Ensemble: *Queen Elizabeth*)

is a junior from Greenville, SC pursuing a B.F.A. in Musical Theatre with minors in Arts Management and Asian American Studies. She is

incredibly grateful to the cast and crew for creating this safe, inclusive, and wonderful space in which to learn, play, and grow. Some of her recent credits include *Fun Home* (Young Alison), *Why Liliya Why?* (Theo), and *Natasha, Pierre, and the Great Comet of 1812* (Ensemble, u/s Mary). Above all: thank you for being here.



RENEE CARTER
(Ensemble: *Othello, Sales Person*)

(she/her) is delighted to be a part of her third production through IU Theater and Drama department. *Orlando*. Renee is a third year

theater student with a concentration in acting at Indiana University. Recently she has worked on independent projects through IU Theater and Drama such as *The Empty Room* as Lauren and *Decolonizing your Mind with Walter Mercado* as Yolanda Vega and Sharron. She would like to thank her parents for their unconditional support and the cast and crew of *Orlando* for making this an inspiring experience.



ANTONIA DALEKE
(Ensemble: *Favilla, Rosina Pepita, Amorous Woman*)

(she/her) is a third year acting student from Bloomington, IN pursuing a major in Theatre and Drama with a minor in Dance. For IU Mainstage:

Macbeth (Weird Sister/Ross/Others); IU Theatre Independent Projects: *Nice Jewish Boy* (Stephanie), *Firebringer* (Choreographer/Producer); University Players: *Clue* (Mrs. Peacock); Others: *Little Women* (Jo March), *Almost, Maine* (Hope).

Antonia would like to thank the cast and crew for their collaborative and continued hard work and dedication to this production. Cheers!



KATELYN DUNIVAN

(Ensemble: *Washerwoman, Priest, Old Man*)

(she/her) is currently a junior pursuing a Theatre major with a concentration in Acting as well as English

Literature. *Orlando* is Katelyn's 2nd IU Mainstage production. She was previously seen in the Ruth N. Halls narrating *Gross Indecency* last fall. Her main aspirations are to help people feel seen and understood through the arts of fiction storytelling, and she hopes that the journey of *Orlando* helps others in the audience feel some validation in journeys of their own.



RIVER EPPERSON

(Ensemble: *Archduke, Duchess*)

is a senior majoring in Theatre & Drama with a minor in Film Production from Haubstadt, IN. He serves as the Managing Director for University

Players. For IU Theatre: *Gross Indecency* (Narrator/Intimacy Captain), *1970s College Sex Comedy* (Assistant Director), *Sueño* (Assistant Director). Other roles at IU include: *The Mystery Plays* (Joe Manning/Others), and *Tell Sad Stories of The Deaths of Queens...* (Jerry Johnson). River is also a writer and hopes to pursue writing professionally after graduation.



ALEXYS HATCH

(Ensemble: *Desdemona, Elevator Man*)

(she/her) is a third year Drama for Youth and Communities major, a degree that she designed this past spring. For IU MainStage: M'other (*Why*

Liliya Why). For University Players: *Ellie (Memories for Sale)*, Assistant Stage Manager (*Lizzie*), Assistant Stage Manager (*Puffs*). For *Unsung Opera*: Director (*Mariage Par Quiproquo*),

Director (*Catherine ou La Belle Femière*).

Independent Projects: Playwright/Director/Producer (*The Empty Room*), Stage Manager & Assistant Director (*Decolonizing Your Mind with Walter Mercado*), Director (*I Am The Asshole*).

Alexys is thrilled that she was given the opportunity to enter the world of *Orlando* with such a fantastic group of friends and artists, and thanks them for creating an environment of exploration and play.



EL HENDRICKS

(*Orlando*)

(they/them) is a non-binary actor and writer from Long Beach, CA. They are honored to be portraying 'Orlando' in their fourth mainstage role with IU Theater.

El's previous credits with IU include *Florizel (The Winter's Tale)*, *Edward Carson (Gross Indecency)*, and *Cassidy (Bowling for Beginners)*. El's next step will be pursuing a performance Masters degree in the UK after graduating this May.



JILLIAN HURLEY

(Ensemble: *Euphrosyne, Amorous Person*)

(she/her) is a senior from Fishers, IN. She is thrilled to be returning to IU Theatre in

Orlando. For IU Theatre: *Everybody (Love)* and *Sueño (Clarín)*. She gives her love to her friends and family and everyone who made the show possible!

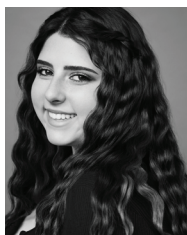


ELIZABETH KASPER

(U/S: *Orlando*)

(they/she) is a senior at Indiana University and is so excited to be a part of this production. Other credits at IU include: *Fleabag*, *Gross Indecency: The Three*

Trials of Oscar Wilde, *Nice Jewish Boy*, and *The Well of Horniness*.



EMMA SHAPIRO
(Ensemble: *Grimsditch*,
Sea Man)

(she/her) is a junior working towards a B.A. in Theatre & Drama. *Orlando* is her second Mainstage production for IU Theatre. Her recent credits include

IU Department of Theatre & Dance's *Everybody* (Somebody), Palos Verdes High School's *Chicago* (Matron "Mama" Morton), *Urinetown* (Little Becky Two Shoes), *Footloose* (Betty Blast), *A Midsummer Night's Dream* (Peter Quince), *Shrek* (Dragon), *Crazy for You* (Patricia Fodor/Follies Girl), and for Palos Verdes Performing Arts, *We Will Rock You* (Khashoggi). Emma is from Palos Verdes, CA.



PETER VALENTINO
(Ensemble: *Clorinda*,
Dupper, *Amorous Man*)

(he/him) is a senior studying Theatre from Bloomington, IN. Peter is excited to be making his mainstage debut! Recent credits include *A Chorus*

Line (Ensemble) and *Catherine* (Fierval). Outside of theatre, Peter loves performing with the IU Singing Hoosiers, reading books, and lifting with the homies.

Huge thanks to the cast and crew for all their hard work as well as his friends and family for their continuous love and support!



GRANIA WHELAN
(*Sasha*)

(they/them) is a senior double majoring in English and Theatre. Past credits include *Bowling for Beginners* (Ensemble), *The Well of Horniness* (Ranger/

Judge), *Twelfth Night* (Valentine/Second Officer/Priest), *More Perfect Places* (Ensemble Member 6) for IU Theatre, *The Welkin* (Ann Lavender) with the Richard Burton Company, and the IU Theatre Independent Projects *I Love My Friends* (Kira) and *Fishbowl* (Francine). Grania is from Bloomington, IN.

INDIANA UNIVERSITY
JACOBS
 SCHOOL OF MUSIC
 2023-24
 MAINSTAGE SEASON

Find out more at operaballet.indiana.edu

JACOBS SCHOOL OF MUSIC
 Bloomington

Production team

Stage Manager
Sarah Mansfield

Assistant Stage Managers
Madeline Horne
Molly Lenig

Production Manager
Trish Hausmann †

Technical Director
Morgan Hemgrove

Fight Coordinator
Leraldo Anzaldua

Intimacy Coordinator
Jenny McKnight

Props Manager
Dan Tracy

Assistant Props Manager
Nick Boisvert

Scenic Charge
Chyna Mayer
Sean Dumm

**Department
Technical Director**
Jeff Baldwin
Emma Brutman

Cutter/Draper
Beth Wallace

Wardrobe Supervisor
Zephany Rivers

Studio Supervisor
Cee-Cee Swalling
Katie Cowan Sickmeier
Heather Milam
Eriko Terao

Costume Crew
Emily Himes
Reilly Smith
Emily Garcia
Jacqueline Preston
Shane Stoltz

Lighting Supervisor
Betsy Smith

Head Electrician
Nic Gwin

Lighting Programmer
Jacob Goldberger

Lighting Studio Employees
Ashley Christensen
Jacob Goldberger
Nic Gwin
Jaden Holtschlag
Sarah Mansfield
Mads West

Lighting Studio Crew
Lexi Brouwer
Nate Cole
Sophie Frank
Katy Kay Plaziak
Mikayla White

Light Board Operator
Judy Qiao

Sound Studio Supervisor
Andrew Hopson

Sound Crew
Matthew Acosta-Hatch
Luc Charlier
AJ Dowling
Abby Hughes
Bri Stoneburner

Sound Board Operators
Griffin Burge
Tamia Crawley
AJ Dowling

Deck Crew
Ce' Etter Stevens
Mandy Zhou



† The Production Manager is a member of the Actors' Equity Association, the Union of Professional Actors and Stage Managers in the United States.

Administrative staff

Artistic Director
Linda Pisano

**Business Director/
Financial Operations Manager/
Fiscal Officer**
Cindi Severance

Department Dramaturg
Dr. Sarah Johnson

**Public Relations & Audience
Development Specialist**
David Tracy

Audience Development Staff
Carolynn Stouder

House Manager
Scott Hogsed

Artistic team



MADISON COLQUETTE
(Dramaturg)

is the Department Dramaturg for IU Theatre & Dance. She previously worked at the International Writing Program at the University of Iowa, the oldest and

largest multinational writing residency in the world, and in the Literary Office at the Eugene O'Neill Theater Center in Waterford, CT. She received her M.F.A. in Dramaturg from the University of Iowa.



LAUREN DIESCH
(Director)

(she/her) is originally from Pittsburgh, but lived in Minneapolis for 11 years. There she worked for the award-winning CLIMB theatre as the Director of Education/

Associate Artistic Director. Additionally, she directed, performed, and taught for numerous Twin Cities companies including: The Children's Theatre Company, Park Square Theatre, Theatre Coup d'Etat, Open Window, Gadfly, Chameleon Theatre Circle, Umbrella Collective, and Theatre Unbound. Lauren received her B.A in Theatre Arts from the University of Pittsburgh and is currently pursuing her M.F.A. in Directing.



MORGAN HEMGROVE
(Technical Director)

(they/them) is the Technical Director for *Orlando*. In the past they have TD'd *Why Liliya Why*, asst. TD'd *Great Comet* and *Into The Woods*. They have also worked

as a Carpenter on *Everybody*, *Gross Indecency*, and *Something Rotten*.



NICOLE HIEMENZ
(Costume Designer)

(they/them) is a third-year M.F.A. student in Costume Design from Durham, NC. They graduated from NC State University with their B.S. in Fashion and Textile

Product Development. For IU Theatre (Costume Design): *Gross Indecency* (KCACTF Region 3 Award for Excellence in Costume Design), *Journeys of Joy: Leave Only Footprints and Interface of Inscription*, *Uncle Play*, *Sueno* (Assistant Costume Designer), *The Threepenny Opera* (Wardrobe Supervisor).



MADELINE HORNE
(Assistant Stage Manager)

(she/her) is a senior at Indiana University studying Arts Management with minors in Law and Public Policy, Theatre, and Spanish. Madeline is excited to serve as one of the

Assistant Stage Managers on *Orlando* this fall. Madeline is from Fishers, IN, and is a member of the professional tap company Circle City Tap Company in Indianapolis. Madeline is an aspiring law student, who hopes to attend law school in 2024 to pursue Entertainment & Arts Law to represent minorities in the industry. Her past stage management credits include *Natasha, Pierre, and the Great Comet of 1812* (ASM), and *Into the Woods* (ASM).



MAGGIE JACKSON
(Scenic Designer)

(she/her) is from Carlisle, PA. She is a third-year, M.F.A. candidate in Scenic Design at Indiana University (IU). Her previous design credits for IU include *Into the*

Woods (IUST), *Natasha, Pierre & The Great Comet of 1812*, and *Bowling for Beginners* (Awarded recognition for Excellence in Design from the Kennedy Center American College Theater). For the University, she has worked as a Scenic Charge Artist (*The Winter's Tale*, *Gross Indecency*, *The Threepenny Opera*) and Prop Manager (*At First Sight 2022*, *Something Rotten*).

Prior to Indiana, Maggie obtained her Bachelor of Arts in Technical Theatre Design & Musical Theatre Performance from East Stroudsburg University (ESU- East Stroudsburg, PA). Her work has been seen regionally with Summer Stock Stage, the Hangar Theatre Company, and Indiana University Summer Theatre (IUST). To see her upcoming works and previous designs visit www.maggiejacksondesigns.com for more information.



SARAH JOHNSON
(Dramaturg)

(she/her) is a dramaturg and scholar. Her research focuses on intercultural theatre, new play development, and dramaturgical methodologies. She is

Assistant Professor of Dramaturgy and Head of the M.F.A. Dramaturgy program at Indiana University Bloomington.



MOLLY LENIG
(Assistant Stage Manager)

is a junior pursuing a dual degree in Arts Management and Theatre and Drama with a minor in fitness instruction. She is from Rolling Prairie, IN. This is her first stage

management experience and she is loving it so far. Molly is also a part of IU's all female cappella group, Ladies First. She is super excited to continue exploring stage management at IU. She would like to thank Sarah and Maddy for being amazing role models and taking her under their wing. Next semester, Molly will be serving as the Production Assistant for *Vox Pop*.



NANCY LIPSHULTZ
(Voice and Dialect Coach)

has been teaching theatre at IUB for eighteen years and has been a professor of theatre for the past 25 years at Wayne State University in Detroit, Cornell University in

Ithaca, NY and Michigan State University. She has been a professional voice coach at Indiana Repertory Theatre since 2007 where she coached *Dial M for Murder* and *The Cay*, *The Curious Incident of The Dog in the Night-Time* which went on to Syracuse Stage

in New York and *Noises Off*. She has coached dialects for the National Tour of *Kiss Me Kate*, the NY City Opera Production of *Dead Man Walking* and for many regional theatres including: Meadowbrook Theatre in Michigan, Arkansas Shakespeare Theatre and Chicago Shakespeare Theatre. She also coaches appellate court prep at IU's Maurer School of Law and for IU Opera Theatre at the Jacobs School of Music. Nancy is a professional actor and has worked on stage, in film and on network television. She completed certification as a master teacher of Patsy Rodenburg's voice technique at Michael Howard Studios in New York, also teaching at their summer conservatory as part of the training. Nancy is a member of AEA, SAG-AFTRA, and VASTA.



SARAH MANSFIELD
(Stage Manager)

(they/them) is a Junior from Cincinnati double majoring in Theatre & Drama and Gender Studies with a minor in Arts Management.

For IU Theatre: *Into the Woods* (Stage Manager), *1970s College Sex Comedy* (Stage Manager), *Natasha, Pierre and the Great Comet of 1812* (Assistant Stage Manager) and *Sueño* (Production Assistant). They are currently the Production Manager for University Players and have props designed *Sweeney Todd*, *Ordinary Days*, *Lizzie*, and *Puffs*. Outside of the theatre, Sarah enjoys reading and runs an Etsy shop.



JOSHUA STALLINGS
(Sound Designer,
Composer)

is excited to join the team for *Orlando!* He has been on staff/faculty at the University of Southern Indiana since 2019, where he fills various roles as a composer, designer, technician, and educator. Previously, Joshua was based in Minneapolis, where he worked many full time and freelance roles across theatre, television, music, and corporate events. Since returning to his native Indiana, he has worked to support theatre across the state, including assisting local high schools and designing and composing for rural arts projects.

Artistic team



DAN TRACY
(Props Manager)

joined the Department of Theatre, Drama, and Contemporary Dance at Indiana University in the fall of 2013 as Prop Master and Scenic Artist Supervisor. He received

his M.F.A. in scenic design from Indiana University where he designed sets for *Sunday in the Park with George*. For IU Theatre: *Spring Awakening*, *In the Next Room or the vibrator play*, and *The Pillowman*. Additionally, Dan has worked as props artisan for Actors Theatre of Louisville, Seaside Music Theater, and New Harmony Theater. He was assistant prop master and teacher at the University of Michigan. Dan has also done event design and management for Andretti Autosports, Delta Faucet, Indy Racing League, NFL players association, and Rolls Royce. Dan continues to design professionally, having recently worked on projects for Phoenix Theatre and Civic Theatre of Indianapolis.



MADS WEST
(Lighting Designer)

(they/them) is a second year M.F.A. Lighting Design Candidate from Benton, AR. This is their third lead design role at IU preceded by *The 1970s College Sex Comedy* and

New Moves/New Directions '23. Previous Credits include *Something Rotten!* (ALD) at IU, and *She Kills Monsters* (LD), *The Spitfire Grill* (LD), and *Miss SAU/OT '20 & '22* (LD) at their alma mater Southern Arkansas University. See more on instagram @madswestlighting.

**MOTHER BEAR'S
PIZZA**

*Enjoy the show...
later, enjoy the pizza!*

EAST: 1428 E. Third Street • 812 332-4495
WEST: 2980 Whitehall Crossing • 812 287-7366

Students | Student Organizations

FLYERS & POSTERS | POSTCARDS | MAGNETS & STICKERS
BUSINESS CARDS | WIDE FORMAT & MOUNTED BANNERS | YARD SIGNS



INDIANA UNIVERSITY

DOCUMENT SERVICES

Your University Printer

Payment Methods We Accept

Visa | MasterCard | American Express | Discover

Place Orders



Contact us at go.iu.edu/Print

Here

IU Summer Theatre Fund contributions

Charles and Katherine Aiken
Diana and Rodger Alexander
Carroll P. Britch
William K. Castellan and Angela D. Huxford
Joan H. Caulton
John and Susan Cronkhite
Samuel Davis
Christopher and Claire Dippel
David and Susanna Fennema
Danita and Robert Forgey
Jacqueline and William Gilkey
Margaret Goergen-Rood and Vernon Rood
Jennifer and Laurence Gordon
Edwin H. Greenebaum
Audrey and Kenneth Heller
Steven L. Hendricks
Carter and Kathleen Henrich
Mariann E. Hosler
Lawrence D. Klein
Robert and Sandra Kleymeyer
Ronald Kovener
Mary M. Kroll
Harlan Lewis and Doris Wittenburg
Priscilla and William Manwaring
Thomas C. Mazur
Richard N. and Maribeth A. McKaig
Sandra Schultz Moberly and Stephen Moberly
Steven and Susan Waggoner
Terry and Sharon Williams
John D. Wilson
Cyndi and Dale Nelson
Carol and Wade Peacock
Joyce and Philip Probst
Richard J. Rose
August and Virginia Semenick
Curtis and Judith Simic
Erdine M. Simic
David Smith* and Lucy Smith
George and Patricia Smith
T. Joe Tower
Steven and Susan Waggoner
Terry and Sharon Williams
Deb Wilson
John D. Wilson

**The hiring and casting of festival guest artists
and consultants is made possible by the Lee
and Deb Norvelle Visitors Fund**

* Denotes donors who have passed away, but whose gift continues to benefit the department and its students.

IU Theatre & Dance supporter contributions

CONTEMPORARY DANCE FUND CONTRIBUTORS

Lillian R. Feldman-Hill
Jennifer L. Gray and Alan S. Bradley
Deborah C. Galvin
Robert J. Hamm Jr. and Gwendolyn A. Hamm
Joy C. Johnson and Jerry L. Johnson J.D.
Allen Hahn and Karen Keagle
George and Mary Korinek
Rose M. Krueger
Laura Judson and Nikolaus Miller
Harlan Lewis and Doris Wittenburg
Meghan McGill
Miah and Jonathan Michaelsen
Elizabeth Jo Monnier
Dennis W and Lynette A. Organ
Linda Pisano
Paul W. Pisano
Susan B. Glenn-Salerno and
Richard P. Salerno
Mary Strow
Sheila A. Ward, Ph.D.

JANE FOX FUND CONTRIBUTORS

Jane Fox
Catharine and Thomas Buck
Jacqueline and Stephen Frew
Gwendolyn and Robert Hamm Jr.
Rose Marie Krueger
Christina Strack

TED JONES STUDENT TRAVEL FUND CONTRIBUTORS

Katherine M. Aiken and Charles
C. Aiken
Louray G. Cain
Lauren Hausmann
Marianne Hausmann and William
Hausmann
Ted W. Jones
Jane Pennell McIntosh
Amy N. Osajima
Eleanor Owicki
Lea Plut-Pregelj and Vladimir N. Pregelj
Doris F. Wittenburg and Harlan L. Lewis

THEATRE & DRAMA FUND CONTRIBUTORS

Rita Murray Anderson and Robert D. Anderson
Nancy Baird
Sarah J. Baumgart and William R. Lozowski
Thomas M. Baydala
Gregory G. Bernet
Judith Biersdorfer
Josiah A. Brown
Hans Buehler
Joan M. Capella

Hoagy B. Carmichael
Walter D. Carroll
Ashley M. Chilla
Wendy W. and Thomas P. Collins
Allison C. Conrad and Donald W. Conrad
Mary and Sheldon Cooper
Georgia R. and Mark K. de Araujo
Kimberlee M. Demers and Alan Demers
Diane T. Dickinson Patrick
Claire and Christopher Dippel
Gresdna A. Doty, Ph.D.
Priscilla J. and John G. Duman
Sean M. Dumm
Jacqueline and Richard Dunham
Susanna C. and David H. Fennema, Ph.D.
Fennema Family Trust
Harriet and William Fierman
Laurette S. Frazier
Barbara Hatcher Gibler
Elizabeth and Steve Hass-Hill
Thomas V. Hinshaw
Scott Hogsted
Todd and Lynn Honderd
Michael D. Huber
Elizabeth and David Ihlenfeld
Rose D. Krakovitz
Laura Judson and Nikolaus Miller
Linda S. Dunlevy Mitchell
Robert J. Kelly, III and Judith R. Kelly
Joe D. King
Douglas and Kay Long
Linda A. Longhofer
The Honorable P.A. Mack, Jr.
Tom Mazur
Richard and Terry McCall
Laura K. McClellan
Marvin D. Moody, Ph.D.
Lawrence Myers, Jr.
Cyndi and Dale Nelson
Christina D. Ondrik
Robert R. and Donna L. Ormiston
Rhoda and C.K. Peters
Linda Pisano
Phil and Joyce Probst
David L. Rinear
Donna Snow Robinson
Corey Rosenberg
Wendy Rubin
Curtis and Judith Simic
Patricia B Smith Rev Trust Peter F Smith Rev Trust
Patricia F. and George E. Smith
Patricia J. Smith
Lynne Perkins Socey and Matthew Socey
Diane J. Spofford
Janice and Walter Stewart
R. Brent Wagner
June E. Weiland
Doris Wittenburg and Harlan Lewis
Wahl Family Charitable Trust
Sharon L. and D. Terry Williams
Donna and Richard Wolf
Jo A. Zirkle

* Denotes donors who have passed away, but whose gift continues to benefit the department and its students.

Department awards, fellowships, scholarships, and endowments

Bright Family Theatre, Drama, and Contemporary Dance Fund

Anne and Jim Bright

Catherine Feltus Preston Scholarship

Catherine Preston Trust
Charles R. Leinenweber

Betty and Charles Aidman (Spoon River) Scholarship/Fellowship

Betty Aidman
Charles Ogilvie Jr.
C.H. Ogilvie Jr Revocable Trust

Betty and Charles Aidman (Spoon River) Scholarship/Fellowship Current Use

Charles Ogilvie Jr.
C.H. Ogilvie Jr Revocable Trust

B.F.A. Scholarship in Musical Theatre

Anonymous

Colleen J. and W. Keith Alexander Scholarship

W. Keith Alexander

Cynthia Dewees Nelson and Dale C. Nelson Musical Theatre Scholarship

Cyndi D. and Dale C. Nelson

David S. Hawes Award

Betty Anne Hawes

Department of Theatre, Drama, and Contemporary Dance Fellowship

Anthony E. Courtade, Ph.D.

Donnelly-Brown Fund for Theatre & Drama

Benita Gail Brown
Brian Thomas Donnelly

Dr. James F. Elrod Scholarship in Theatre & Drama

James F. Elrod

Featheringill Theatre and Drama Scholarship

Jack L. Featheringill

Fontaine Syer Directing Fellowship in Theatre

Susan Greenberg
John Rusher and
Mary K. Nash Rusher
Henry Woronicz

Foster Harmon Graduate Fellowship in Theatre

L. Foster Harmon

Foster Harmon Undergraduate Scholarship in Theatre

L. Foster Harmon

Frank and Becky Hrisomalos Scholarship in Theatre & Drama

Becky Hrisomalos
Katy Bigge Kestner Fund
Richard and Alicia Lytle

George Pinney Musical Theatre Scholarship

Anne and Jim Bright
Paul Goldberg
P.A. Mack
Jerry and Lucy McIntosh
Marilyn Norris
Ilene and John Reid

Harlan L. Lewis and Doris F. Wittenburg Scholarship in Theatre and Drama

Doris F. Wittenburg
and Harlan L. Lewis

Harlan L. Lewis Family Scholarship

Harlan L. Lewis and
Doris F. Wittenburg

Harv and Connie Hegarty Theatre and Drama Production Fund

Harv and Connie Hegarty

Helen Sarah Walker Scholarship

Michael L. Walker
Baker Hughes Foundation
Cory and Margaret Baumhardt
Irwin and Lois Jacobs

Howard Jensen Endowment

Howard J. Jensen, Ph.D.
Thor R. Steingraber

IU Summer Theatre Fund

Robert K. and Danita H. Forgey

Jay Mark Scholarship in Theatre & Drama

Alvin Goldstein

Joyce and Jim Grandorf Theatre, Drama, and Contemporary Dance Fund

Joyce and Jim Grandorf

Katy Bigge Kestner Fund

Elmer N. Kestner, III

Kimberly S. Hinton Memorial Scholarship in Contemporary Dance

Bridget Balint
Jennifer Gray and Alan Bradley
Madison Colquette
Eileen Curley
Angela Gast
Lois and Richard Gast
Nancy Gray McKelvey and
Raymond McKelvey
Suzanne and Keith Hinton
Steven Jarosz
Laura and Nikolaus Miller
Reuben Lucas
Eleanor Owicki
Amanda and William Peterson
Linda Pisano
Bret Popper
Karyn Rahn and Bradley Strode
Cat Richards
Elizabeth and John Shea
Jamie and Jonathan Stuckey

Lee Martin Scholarship

Nicole Kellgg
Bryant H. and Maria M. Owens
Linda M. Pisano
Kaitlyn L. Smith
Bhavna Vasudeva

Lee and Deb Norvelle Fund

Lee Norvelle, Ph.D., LL.D

Lora C. Shiner Memorial Scholarship

Lora Shiner Foundation

Marion Bankert Michael Student Assistance Fund in Theatre and Drama
R. Keith Michael, Ph.D.
and Marion B. Michael

Murray and Sue Robinson Scholarship
F. Murray Robinson, C.P.A.
and W. Sue Robinson

Musical Theatre Undergraduate Scholarship
Clinton D. Roeth-McKay, Ph.D.
and Peter J. Roeth-McKay

Nota Scholl McGreevey Scholarship
John and Nota McGreevey

Peglow-Blessing Family Performing Arts Scholarship
Sue Ellen Peglow

Ralph Collins Memorial Lectureship
David Collins
Dorothy Craig Collins
Wayne Craig

Richard L. Scammon Award
Bryce Broughton
Barbara Lockard-Zimmerman

Robert Preston Scholarship
Catherine Preston Trust
Charles R. Leinenweber

Rosemary R. Schwartzel Scholarship
Patricia J. Redens Wrege

Suzanne M. Collins and Charles A. Pryor Scholarship
Suzanne M. Collins and
Charles A. Pryor

Student Showcase Fund
Stephen C. and Sandra
Schultz Moberly
Curtis R. and Judith E. Simic
Samuel R. and Patricia S. Ardery
Kenneth M. Tewel, Jr., M.D.
and Brenda M. Tewel
Jeffrey L. and Pamela Jones
Davidson, J.D.
David J. and Carolyn M.
Emmert, Ed.D.
Anne and Jim Bright
Sue Huffman and
Winston G. Shindell
George B. Pinney
and Scott B. Jones
Martin J. Kaplan, M.D.
and Linda K. Kaplan
Doris F. Wittenburg
and Harlan L. Lewis

Dale C. and Cyndi D. Nelson
Stephen C. and Jo Ellen Ham
Anne T. Fraker and
Richard J. Rose, Ph.D.
Dr. Kenneth M. Tewel MD
& Brenda M. Tewel JT TEN
Anne Fraker Revocable
Living Trust
Martin and Linda Kaplan
Revocable Trust
Ruth Albright
August Semenick
Carolyn A. Bailey
Robert W. Galm
Diana Dehart Lehner
Athena R. Hrisomalos
John D. Hobson
James C. Craig, Ph.D.
Judith L. Schroeder
Iris F. Kiesling
Terry L. Labolt
Virginia Semenick

Theatre Circle Scholar Award
Members of Theatre Circle

Theatre Circle Fund
Earl F. Luetzelschwab
and Deborah Burkhart

Theatre and Drama Center Endowment
Carl F. Kiehler

Theatre & Drama Production Endowment
Phyllis J. Horton
Linda M. Pisano

Theatre, Drama, and Contemporary Dance Scholarship
D. Terry Williams, Ph.D.
and Sharon L. Williams
Mike Knight

Theresa Anne Walker Scholarship
Michael L. Walker

Fran Snygg Endowment
Marianne and Charles E. Snygg
Gertrude and Seymour Alberts
Anita Aldrich Ed.D.
Anitra Bareikis
Patricia E. Biddinger
Emily Ann Bogard
Leon and Roberta Brauner
James P. Burling II
Robert E. Burton
Marcia M. Busch-Jones
Jean E. Campbell
Ann M. K. and Thomas R. Carter Ph.D.
Orchard Close
Evelyn A. Davies Ed.D.
Deborah A. Freund Ph.D.
Robert L. Gluckstern

Janet Hamburg
Patricia Dain Haskell
William H. Hays III
Robin Herrington-Bowen
Rachel and David M. Hertz
Jo An Huff
Peter P. Jacobi
Thomas J. Kniesner Ph.D.
Rachel Lampert
Bernice A. Pescosolido Louise
Rebecca Rarick
Nancy and James W. Reeves
Edward and Sydney Regan
Robert and Sandra Reiberg
Carlos Rodriguez
Geneva B. Scriggins
Evelyn S. Turner
Allison and Thomas Walsh
Byron P. Wheeler
Mark F. Wheeler and Jan Wheeler Ph.D.

Jason W. Stradtman Prize
Alan Airth
Byron and Kimberly Antillon
Johnston Atoll
Dawn and Paul Barrera
Ali and Robert Bartholomew
Darlene Bishop
Donna Colwell
Bruce Creamer
Donald and Patricia Crouse
Kathleen Galindo
Adelita Garza
Arlene and Martin Glassman
Diane and Frederic Hite
Lucena A. Hocking
Denis and Robin LaBonge
Anthony and Karin Lekas
Dick and Karen Lemen
Gael and Glenn Libby
Fred and Peggy Lynn
Judith and William Maisel
Sharon Merz
Marybeth and Robert
Michel
Susan Moore
Elaine Peterson
Robert RADIUS
Joanne and Paul Reynolds
Martha and Robert Santos
Sharon Seymour
Martin and Charlotte Stradtman
Dennis and Sharon Tase
Howard and Joan Thompson
Catherine and William Titterud
Andrew and Rena Wellman
Lynda Wicks
Audrey and Robert Windsor

Theatre Circle

Theatre Circle was founded in 1978 to encourage the study and practice of theatre arts at IU and to promote an awareness of IU Theatre throughout the community. Theatre Circle members enjoy a variety of benefits, including

acknowledgment in all IU Theatre programs; emailed information about all performances; glimpses behind the scenes; exclusive talks by directors, designers, and theatre scholars; special event invitations; and much more.

SUSTAINING BENEFACTORS

(Gifts of \$5,000 and above)

Teresa and John Ayres
Benita Brown and
Brian Donnelly
Jean* and Doris Creek
Community Foundation of
Bloomington & Monroe
County
Connie and Harv Hegarty
Becky and Frank* Hrisomalos
The Lawrence W. Inlow
Foundation
Carl F. Kiehler
Sara* and Bob LeBien
Marion Bankert Michael and
R. Keith Michael
Dr. Howard Polley
Reva* and Jack Shiner
Mr. and Mrs. Kenneth W.
Sparks
Bruce and Shannon Storm - In
Honor of George Pinney
Bruce and Shannon Storm -
In Honor of Tiffany Storm
Ericson
Harlan Lewis and
Doris Wittenburg
Margaret* and William Yarber

ANNUAL GIVING

July 1 2022–
July 1 2023

ASSOCIATE PRODUCERS (\$2,500)

Diana and Rodger Alexander –
The Winter's Tale
Phil Evans and Herbert O.
Kuebler – *Gross Indecency*
Phil Evans and Herbert O.
Kuebler – *Into the Woods*
Harlan Lewis and Doris
Wittenburg – *At First Sight*
Harlan Lewis and Doris
Wittenburg – *Journeys of Joy*
Cyndi and Dale Nelson –
Something Rotten!

PARTNER ASSOCIATE PRODUCERS (\$1,250)

Anne and Jim Bright –
Gross Indecency
Kathryn and Barry Brown –
Something Rotten!
Harlan Lewis and
Doris Wittenburg –
Gross Indecency
Judy Schroeder –
Gross Indecency
Harlan Lewis and Doris
Wittenburg – *At First Sight*

BENEFACTOR (\$1,000 and above)

Diana and Rodger Alexander
Teresa and John Ayres
Anne and Jim Bright
Kathryn and Barry Brown
Julie A. and Cary K. Curry
Carolyn and Dave Emmert
ExxonMobil Foundation
Phil Evans and Herbert
Kuebler
Jacqueline and William Gilkey
James N. and Joyce Grandorf
Stephen C. and Sandra S.
Moberly
Cyndi and Dale Nelson
Schwab Charitable Fund
Paula W. Sunderman
Judy Schroeder

PATRON (\$500 –\$999)

Ruth Albright
Deborah Burkhart and Earl F.
Luetzelschwab
Jacqueline and James Faris
Jo E. and George L. Fielding
Sandra and Don Freund
William A. and Jacqueline
Gilkey
Michael Gleeson
Jo Ellen and Steve Ham
Marlin G. Howard
Kate Kroll
Howard D. Mehlinger
Idalene Kesner and Paul
Robins

Wendy A. Rubin
Carol and Wade Peacock
Laura C. Trout
Bradley C. Wheeler, Ph.D.

SPONSOR (\$250–\$499)

Katherine and Charles Aiken
Terry Baer
Douglas and Hilary Anderson
Shirley Bernofsky
Cathleen M. Cameron
Ashley and Mark Chilla
Jean Cook
Michael E. Gleeson, Ph.D.
John D. Hobson
Marlin G. Howard
Liam Castellan and Angela
Huxford
Ronald Kovener
Margaret and Donald Jones
Judith Mahy and Richard M.
Shiffrin
Howard D. Mehlinger, Ph.D.
Sherry and Dale McFadden
Maribeth and Richard McKaig
Joanne Passet and Deborah
Wehwman
Katherine and Travis Paulin
George Pinney and Scott Jones
Mary F. Popp
Elizabeth C. Raff
Stanley Ritchie
Anne T. Fraker and
Richard Rose
Sue Sgambelluri
Phyllis C. Schwitzer
Erline M. Simic
Alan and Kathryn Somers
Jeffrey and Michelle Stuckey
Barbra Suthers
Young Ae and J. Timothy
Tresslar
Patricia and William Wheeler
Andrea White and Brad
Schuesser
Donna and Richard Wolf

* Denotes donors who have passed away, but whose gift continues to benefit the department and its students.

**CONTRIBUTOR
(\$100–\$249)**

Carolyn Bailey
Bloomington Thrift Shop–
Psi Iota Xi
Joan Marie Capella
Joan H. Caulton and Edwin H.
Greenebaum
Sandra Churchill
Pamela J. and Jeffrey L.
Davidson
Samuel Davis
Rosemary and Richard Dever
Lee Ehman and
Barbara Wilcox
Cheryl A. Engber
David and Tyler Ferguson
Ferguson Law
Shirley A. Fitzgibbons
Lee W. Formwalt and
Richard P. Weichert
Anne T. Fraker and
Richard J. Rose, Ph.D.
Linda F. Gregory
Sandra Hall
Steven L. Hendricks
Darla Brown and Michael Hunt
Iris F. Kiesling
Ronald Kovener
Diana Dehart Lehner
Carolyn M. Lipson-Walker and
George L. Walker
Douglas A. and Kay L. Long
James H. and
Jeanne L. Madison
Nancy G. Martin
Tom Mazur
James L. McLay
Virginia Metzger
Gerry Miller
Patricia W. Mulholland
Denise and Harold Ogren
Katherine and Travis Paulin
Carol Pierce
Linda Pisano
Shirley R. Pugh
Scott and Susan Putney
Lislott and John Richardson
F. Wayne Roberts, Jr.
Donna Snow Robinson
Marilyn F. Saum
Erdine M. Simic
Lynne Perkins and
Matthew Socey
N. J. Stanley, Ph.D.
Barbara J. Suthers
Gerry E. Titus
Scott W. and Teresa M. Turner

Susan and Steven Waggoner
Judy Walcoff
Mary Wennerstrom Phillips
Judy Wertheim

DONOR (up to \$99)

Elaine and Philip Amerson
Ernest Bernhardt-Kabisch
Amy M. Briseño
Michael E. Hunt and
Darla S. Brown
Angela D. Huxford and
William K. Castellan
Ruth Chesmore
Susan E. and John I. Cronkhite
John C. Custer
Gresdna Doty
Cheryl A. Engber, Ph.D.
Pam and William Fawcett
Bonnie Brownlee and
Bruce L. Jaffee
Barbara W. and Vern Jorck
Priscilla Osovski and
William A. Manwaring
Marilyn F. Norris
Kathryn A. Oyer
Michael D. Scott
August Semenick
Virginia Semenick
Patricia and Peter Smith
Dr. N.J. Stanley
Gene and Ellen Stern
Kelli and Anthony Zabel

**HONORARY LIFETIME
MEMBERS**

Harv and Connie Hegarty
John Kinzer
Marion Bankert Michael and
R. Keith Michael
Marilyn Norris
Susan Parrish and
Thomas P. Shafer

MEMORIALS

David Albright
Eleanor Auer
J. Jeffery Auer
Roberta Brauner
Richard C. Burke
Ledford and Julia Carter
Nelda Christ
Dorothy (Dottie) Collins
Don Cook
Carolyn Kovener

Donna Creek
Cyril M. Franks
Charles and Adele Gallus
Martha and Victor Harnack
Sandra L. Hertling
Frank Hrisomalos
Howard Jensen
Harold Watling Jordan
Lambert and Elizabeth Kiehler
Sara LeBien
Nita Levison
Jeanette Calkins Marchant
Rosemary Miller
Leonard M. Phillips
Robert L. Shettleroe
Reva Shiner
Coleen Stanley
Fontaine Syer
Grafton Trout
Herman B Wells
Albert Wertheim
Nathan and Pamela Zael
Paul N. Zietlow

**THEATRE CIRCLE
BOARD
2023–2024**

President

Liam Castellan

Vice President

Brad Schiesser

Secretary

Eric Shelley

Treasurer

Marlin Howard

Members

Pam Davidson
Sandy Hall
Dale McFadden
Cyndi Nelson
Shannon O'Connor-Starks

EX OFFICIO:

Linda Pisano
Sue Sgambelluri

* Denotes donors who have passed away, but whose gift continues to benefit the department and its students.

SEASON ASSOCIATE PRODUCERS

Diana and Rodger Alexander
Harv and Connie Hegarty
Doris Wittenburg and Harlan Lewis
Cyndi and Dale Nelson

SEASON PARTNER LEVEL ASSOCIATE PRODUCERS

Anne and Jim Bright
Kathryn and Barry Brown
Phil Evans and Herbert Kuebler,
partnered with Judy Schroeder
Jo Ellen and Steve Ham
Doris Wittenburg and Harlan Lewis

SEASON EAGERLY PARTNERED ASSOCIATE PRODUCERS

Ashley and Mark Chilla
Carolyn and Dave Emmert
Marlin Howard
Angela Huxford and Liam Castellan

SEASON ASSOCIATE PRODUCERS

Diana and Rodger Alexander
Phil Evans and Herbert Kuebler



Book Tickets Today!
 SeeConstellation.org
 812.336.9300

SPECIAL EVENT

GLITCHES IN REALITY

STARRING SIMON CORONEL



NOV 9 - 12

Curious George
The Golden Meatball

Book and Lyrics by
 Jeremy Desmon Music by
 John Kavanaugh

Based on the books by Margret and H.A. Rey
 and the play owned by Universal Stage Productions

OCT 20 - NOV 5

REPLD DANE
Matilda
 THE MUSICAL

Book by
 Dennis Kelly Music and Lyrics by
 Tim Minchin

DEC 14 - 31

Webster's
B!+@#
 by Jacqueline Biercher

A play about
 words and the
 people who
 define them.

JAN 25 - FEB 11

THE PLAY THAT GOES
WRONG

By Henry Lewis, Henry Shields,
 and Jonathan Sayer

MAR 21 - APR 7

Alex Gold:
Stuck on Repeat

By Sarah
 Ziegler Blair
 and
 Kellen Blatr

A hilarious classroom
 adventure where the
 audience gets to make
 all the decisions!

APR 26 - MAY 12

THE BREAK
 A NEW ROCK MUSICAL

MUSIC BY
 MICHAEL EDOMAN

BOOK & LYRICS BY
 CHRISTOPHER DIMOND

1 COUPLE,
 30 DAYS OFF,
 NO RULES!

JUN 6 - 23

One World at

Woolery MILL

with One World Catering



up to 500 guests
free parking
industrial chic
additional amenities

oneworldatwoolery.com

(812) 334-3663

catering@bloomington.com


one
world
Catering



catering for all occasions
available at your venue or Woolery Mill

oneworldcaters.com

(812) 334-3663

catering@bloomington.com

SPECIAL THANKS **to our 2022–2023** **and 2023–2024 season** **Associate Producers**

The contributions of associate producers directly fund an IU Theatre production of the donor's choice. As an associate producer, you will help directly support the cost of a production's costume, scenic, lighting, sound, and projection design.

Your name will be featured in our programs and all curtain speeches. You will also enjoy benefits as year-round members of Theatre Circle, an organization founded to promote and encourage the study and practice of theatre arts in the Department of Theatre, Drama, and Contemporary Dance and an awareness of theatre throughout the community.

For more information,

please pick up a Theatre Circle brochure in the lobby,
contact David Tracy at davtracy@iu.edu
or Linda Pisano at lpisano@indiana.edu or 812.855.0809.

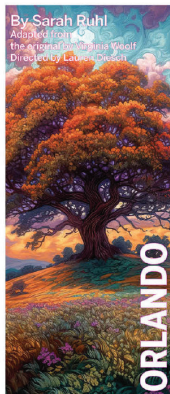
You can also visit the Department of Theatre, Drama, and Contemporary Dance website at theatre.indiana.edu and select the Theatre Circle link.





2023/2024 SEASON

Live performance, living impact



**SEPT-OCT
29-7**

RUTH N. HALLS THEATRE



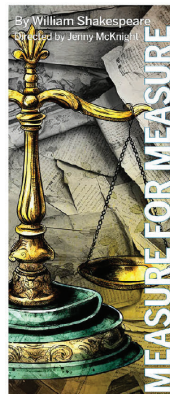
**NOVEMBER
2-11**

WELLS-METZ THEATRE



**DECEMBER
8-9**

RUTH N. HALLS THEATRE



**JANUARY
19-27**

STUDIO THEATRE



**FEB
9-17**

RUTH N. HALLS THEATRE



**FEB-MAR
29-8**

WELLS-METZ THEATRE



**APRIL
12-20**

RUTH N. HALLS THEATRE



**APRIL
26-27**

WELLS-METZ THEATRE

BUILD YOUR OWN SEASON

STARTING AT
\$88 ADULT
\$52 STUDENT

Season Subscriptions on sale July 17th

visit theatre.indiana.edu or call (812) 855-1103

